

Fantasea Line Wet Conversion Lenses Compatibility Table

1. Macro Conversion Lenses

Camera	Housing	UCL-05LF +6 (#5115)	UCL-06LF +12 (#5116)	UCL-09F +12.5 (#5124)	UCL-900F +15 (#5118)
Canon G9 X	Fantasea FG9X	Compatible *2	Compatible *2	Compatible *2	Compatible *2
Canon G9 X Mark II	Fantasea FG9X	Compatible *2	Compatible *2	Compatible *2	Compatible *2
Canon G7 X Mark II	Fantasea FG7X II A	Compatible *2	Compatible *2	Compatible *2	Compatible *2
Canon G7 X Mark III	Fantasea FG7X III	Compatible *2	Compatible *2	Compatible *2	Compatible *2
Sony RX100 III	Fantasea FRX100 VA	Compatible *2	Compatible *2	Compatible *2	Compatible *2
Sony RX100 IV	Fantasea FRX100 VA	Compatible *2	Compatible *2	Compatible *2	Compatible *2
Sony RX100 V / VA	Fantasea FRX100 VA	Compatible *2	Compatible *2	Compatible *2	Compatible *2
Sony RX100 VI	Fantasea FRX100 VI Limited Edition	Compatible *2	Compatible *2	Compatible *2	Compatible *2
Sony RX100 VII	Fantasea FRX100 VI Limited Edition	Compatible *2	Compatible *2	Compatible *2	Compatible *2
Sony a6000	Fantasea FA6000 *1	Compatible *2	Compatible *2	Compatible *2	Compatible *2
Sony a6300	Fantasea FA6500 *1	Compatible *2	Compatible *2	Compatible *2	Compatible *2
Sony a6300	Fantasea FA6500 V2 *1	Compatible *2	Compatible *2	Compatible *2	Compatible *2
Sony a6400	Fantasea FA6400 *1	Compatible *2	Compatible *2	Compatible *2	Compatible *2
Sony a6500	Fantasea FA6500 *1	Compatible *2	Compatible *2	Compatible *2	Compatible *2
Sony a6500	Fantasea FA6500 V2 *1	Compatible *2	Compatible *2	Compatible *2	Compatible *2

2. Wide Angle Conversion Lenses

Camera	Housing	BigEye Lens M67 Mark II (#5138)	UWL-400F /400Q (#5140/5142)	UWL-04F (#5159)	UWL-09F (#5157)	UWL-09Pro (#5158)
Canon G9 X	Fantasea FG9X	Compatible	Compatible *7	Compatible *7	Compatible	Compatible
Canon G9 X Mark II	Fantasea FG9X	Compatible	Compatible *7	Compatible *7	Compatible	Compatible
Canon G7 X Mark II	Fantasea FG7X II A	Compatible *3	Compatible *4 *7	X (incompatible)	Compatible *5	Compatible *6
Canon G7 X Mark III	Fantasea FG7X III	Compatible *3	Compatible *4 *7	X (incompatible)	Compatible *5	Compatible *6
Sony RX100 III	Fantasea FRX100 VA	Compatible	Compatible *7	Compatible *6 *7	Compatible	Compatible *3
Sony RX100 IV	Fantasea FRX100 VA	Compatible	Compatible *7	Compatible *6 *7	Compatible	Compatible *3
Sony RX100 V / VA	Fantasea FRX100 VA	Compatible	Compatible *7	Compatible *6 *7	Compatible	Compatible *3
Sony RX100 VI	Fantasea FRX100 VI Limited Edition	Compatible *10	X (incompatible)	X (incompatible)	Compatible *10	Compatible *11
Sony RX100 VII	Fantasea FRX100 VI Limited Edition	Compatible *10	X (incompatible)	X (incompatible)	Compatible *10	Compatible *11
Sony a6000	Fantasea FA6000 *1	X (incompatible)	Compatible *8 *7	X (incompatible)	Compatible *9	Compatible *8
Sony a6300	Fantasea FA6500 *1	X (incompatible)	Compatible *8 *7	X (incompatible)	Compatible *9	Compatible *8
Sony a6300	Fantasea FA6500 V2 *1	X (incompatible)	Compatible *8 *7	X (incompatible)	Compatible *9	Compatible *8
Sony a6400	Fantasea FA6400 *1	X (incompatible)	Compatible *8 *7	X (incompatible)	Compatible *9	Compatible *8
Sony a6500	Fantasea FA6500 *1	X (incompatible)	Compatible *8 *7	X (incompatible)	Compatible *9	Compatible *8
Sony a6500	Fantasea FA6500 V2 *1	X (incompatible)	Compatible *8 *7	X (incompatible)	Compatible *9	Compatible *8

*1 – Using the Sony 16-50mm lens (SELP1650) and the FML Flat Port 34 (#2101).

*2 – Zoom in with camera lens to avoid a vignette and to produce best macro results. The lens features a front thread which allows for stacking additional lenses and/or filters.

*3 – A slight vignette is produced at the wide range of the camera lens and solved at 26mm.

*4 – A vignette is produced at the wide range of the camera lens and solved at 33mm.

*5 – A vignette and soft corners are produced at the wide range of the camera lens and solved at 28mm.

*6 - A vignette is produced at the wide range of the camera lens and solved at 30mm.

*7 – Use the *EyeDaptor M67-F52 Lens Adaptor* included with the wet lens to mount it on the housing lens port.

*8 - A vignette is produced at the wide range of the camera lens and solved at 19mm.

*9 - A very slight vignette is produced at the wide range of the camera lens and solved at 17mm.

*10 - A vignette is produced at the wide range of the camera lens and solved at 29mm.

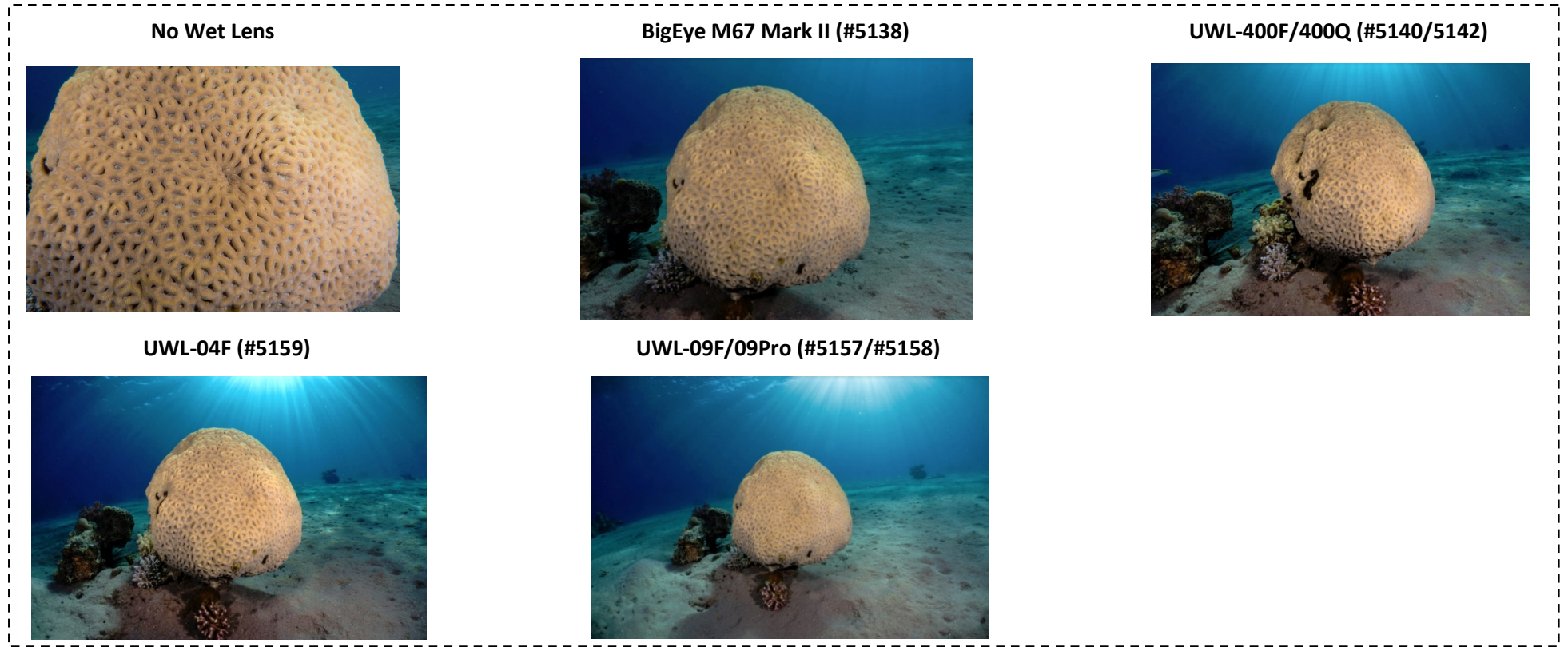
*11 – A vignette is produced at the wide range of the camera lens and solved at 31mm.

Note that info provided in the tables above refers to setups which include no Quick Release Bayonet Mounts or Lens Flip Adaptors

<For comparison images, please refer to the following page>

ANGLE OF COVERAGE - Comparison Images

Comparison images below refer only to **angle of coverage**. Note that the various lenses differ by other significant optical and physical attributes. For further information regarding these lenses, please visit the Fantasea website – www.fantasea.com – or contact your local Fantasea dealer.



Images above were captured using the Sony RX100 V camera inside a Fantasea FRX100 VA Housing using the minimal focal range allowing images to be captured with no vignette